

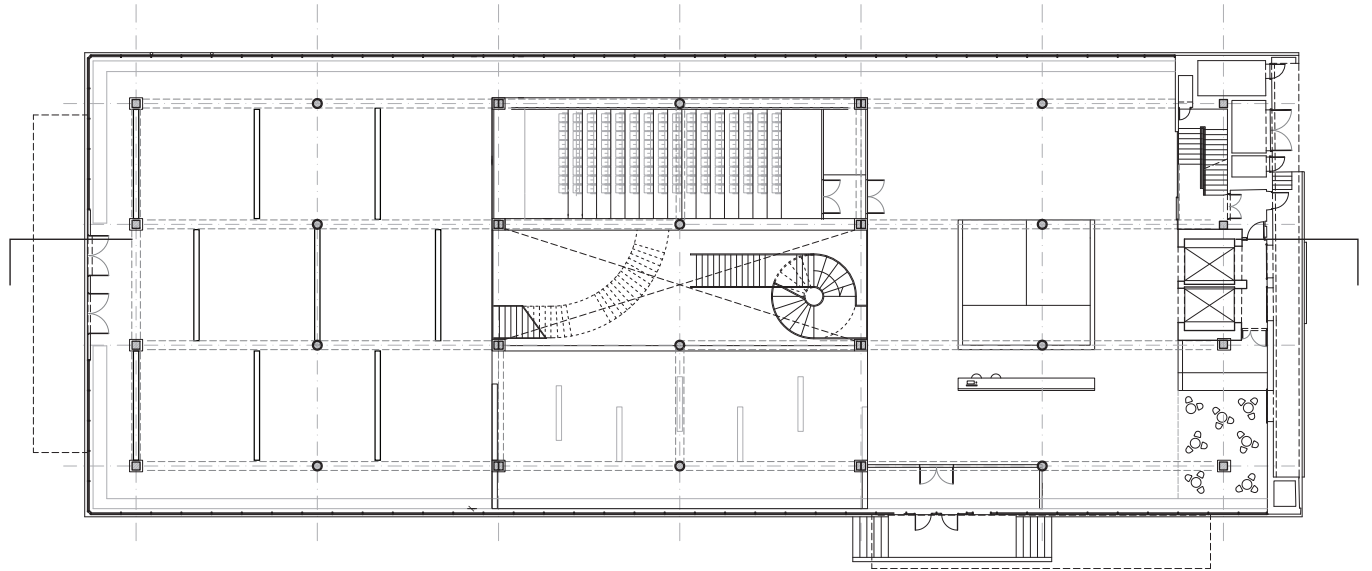
**Warsaw Museum of Contemporary Art  
Warsaw, Poland**

The Museum of Modern Art Warsaw has an ambitious mission to both collect and display contemporary art from Poland and around the world. It is one of the few museums in the region actively collecting and exhibiting work from young artists in Poland working across media, including video, installation, performance, and sculpture.

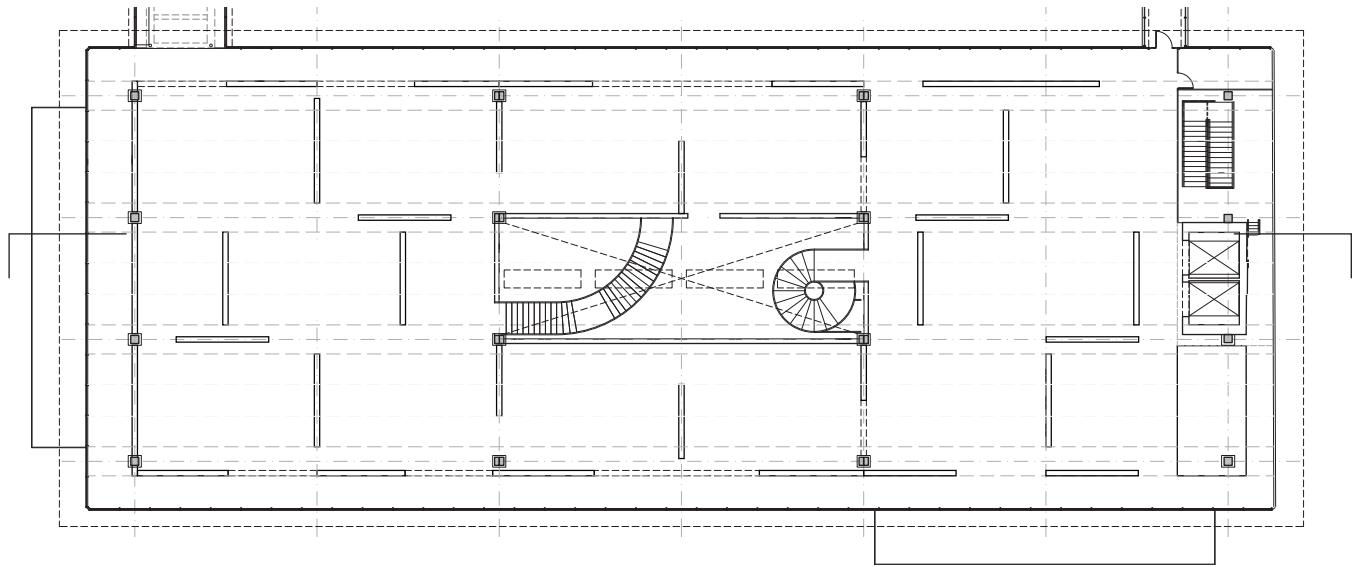
Our project adapts a former government-run furniture showroom, in a landmarked late-modern building directly across Warsaw's imposing Ministry of Culture building. The museum's director has called late-modernism to be Poland's only national "style," giving great importance to adapting the structure for a new life as a national museum.

The project both clarifies the bold cast-concrete structure, and re-imagines how it can be used. Though a series of strategic insertions in the atrium and the lobby, SO-IL's design opens up the ground floor space, adds an auditorium, and reconfigures the retail circulation to encourage exploration, and to produce different exhibition environments.

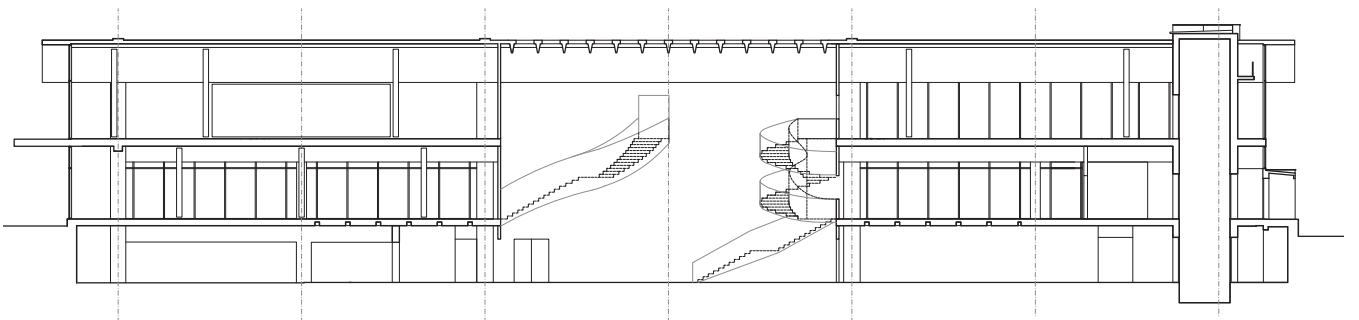
<b>Client</b>	<b>Museum of Modern Art Warsaw</b>
<b>Program</b>	<b>Museum, adaptive reuse</b>
<b>Area</b>	<b>50000 sf / 4650 m<sup>2</sup></b>
<b>Status</b>	<b>Competition entry 2012, First Prize</b>
<b>Team</b>	<b>Florian Idenburg, Ilias Papageorgiou, Jing Liu, Ted Baab, Gun Ho Kim</b>
<b>Collaborators</b>	<b>Associate Architect: Projekt Praga</b>



**Ground floor**



**Second floor**



**Section**



**Exterior**



**Gallery**



Atrium gallery