

**Art Collections Center
New York, USA**

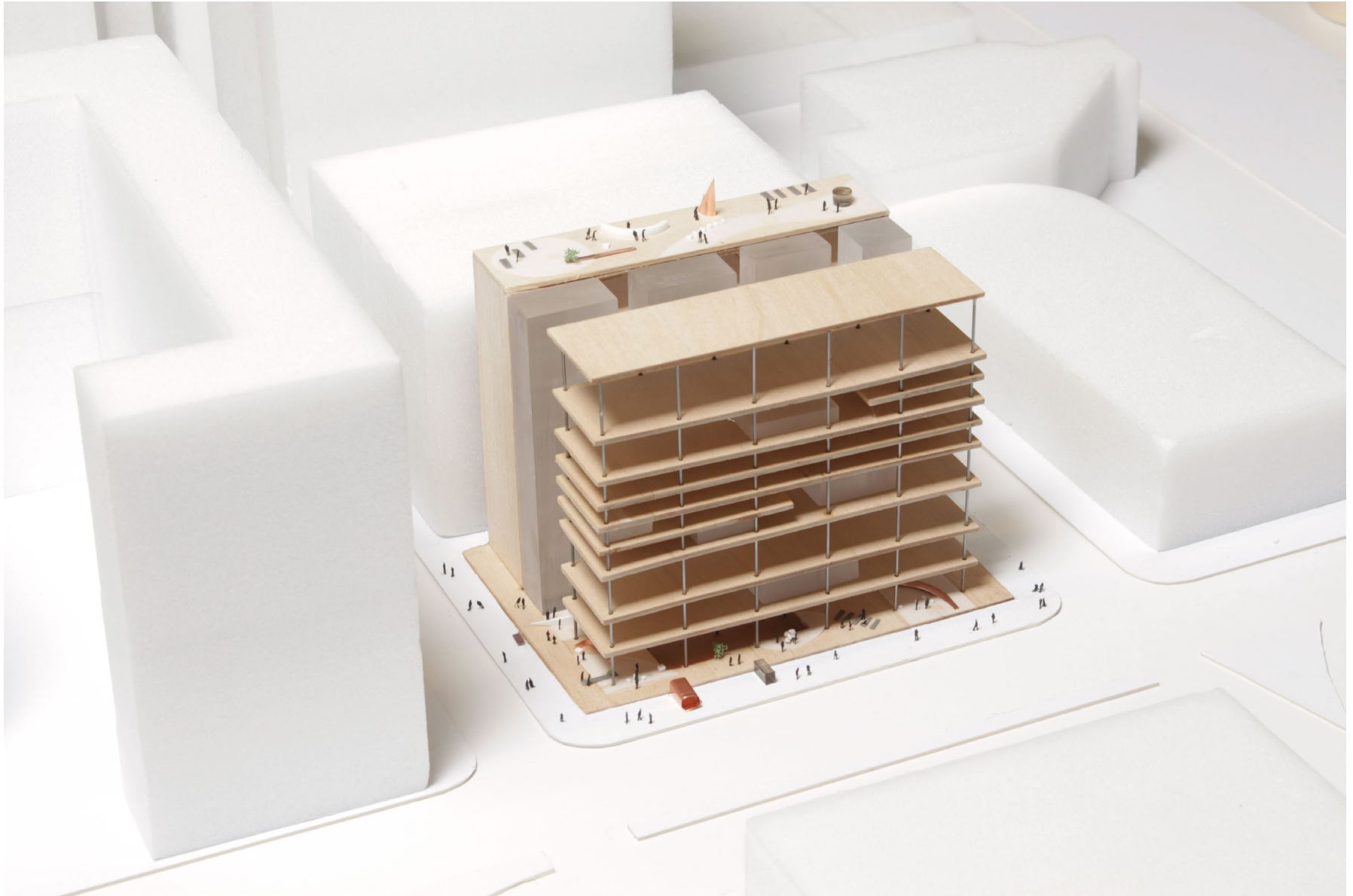
The Art Collections Center houses the storage of a renowned collection of modern and contemporary art. Currently dispersed across multiple locations, the Collections Center will be the hub for administrative and exhibition related activities from conservation and storage to exhibition mock-ups and research. Located in New York's East Harlem, the Center is an active collaborator in the area's changing economic, social and cultural context.

SO – IL developed three design approaches that investigate how the building could be a tool for learning. Each organization conditions a different form of institutional interaction between the collection, staff and community. In addition to complex environmental, security and climate requirements for the protection and maintenance of the collection, the Center integrates both open and private spaces for staff with a flexible and dynamic public forum.

| | |
|-----------------|---|
| Client | Undisclosed |
| Location | New York, USA |
| Program | Art storage, exhibition staging, public plaza |
| Area | 16.700 m² / 180,000 sf |
| Status | Competition, 2015 |
| Team | Florian Idenburg, Jing Liu, Ilias Papageorgiou, Ted Baab, Nazanin Nayini, Kerim Miskavi, Lucie Rebeyrol, Pietro Pagliaro, David Hecht, Yuko Sono, Bryson Armstrong |



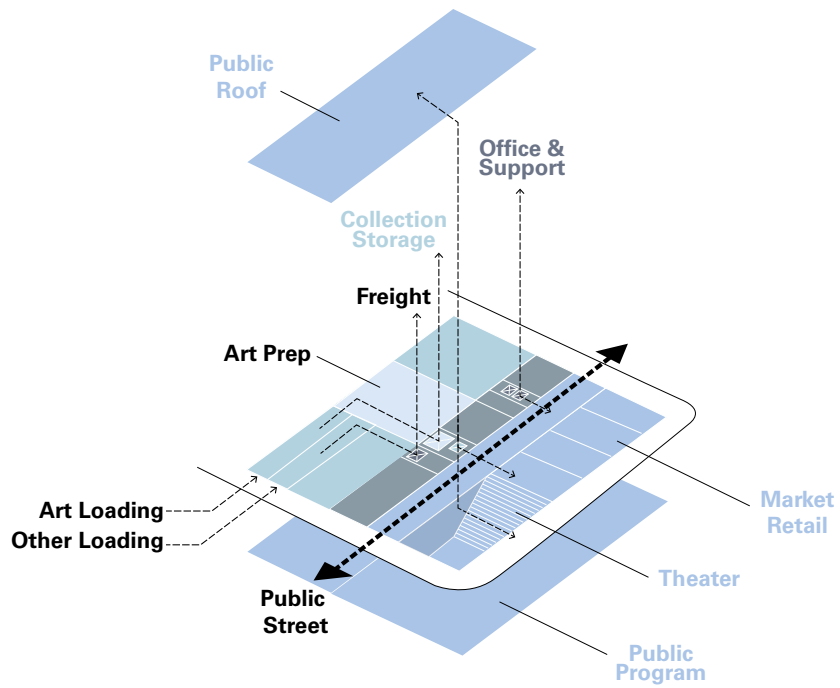
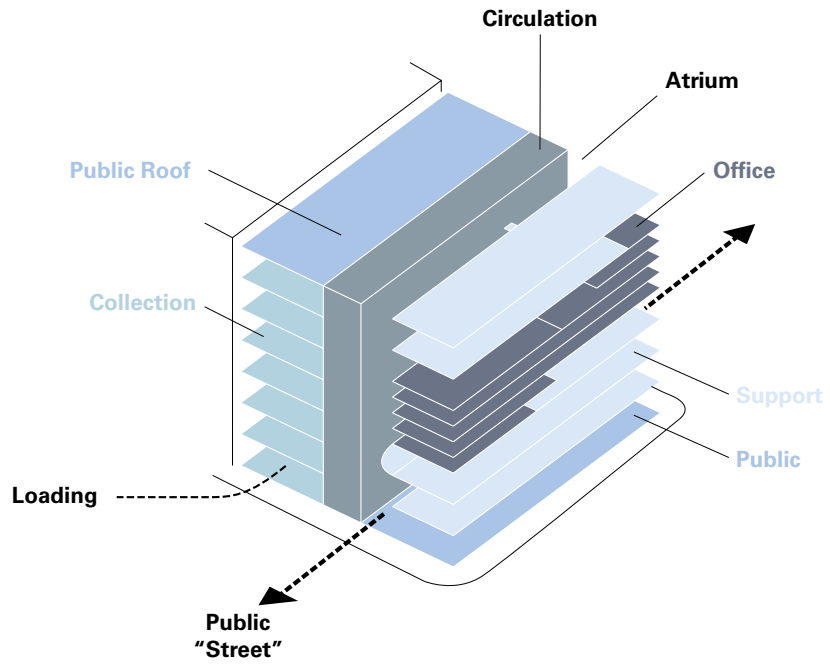
Three design approaches



Sketch 1: context model



Sketch 1: section model



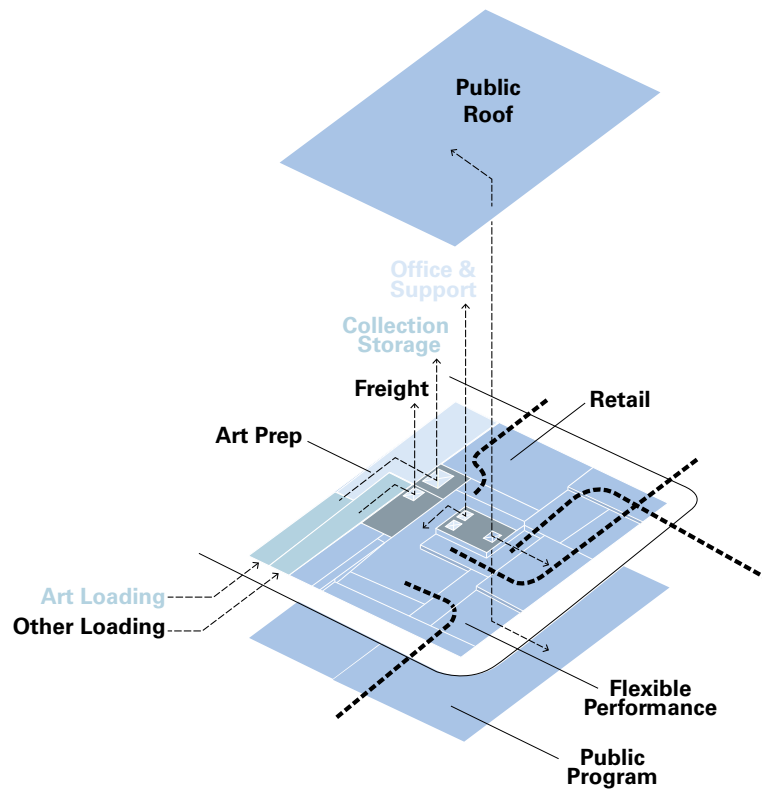
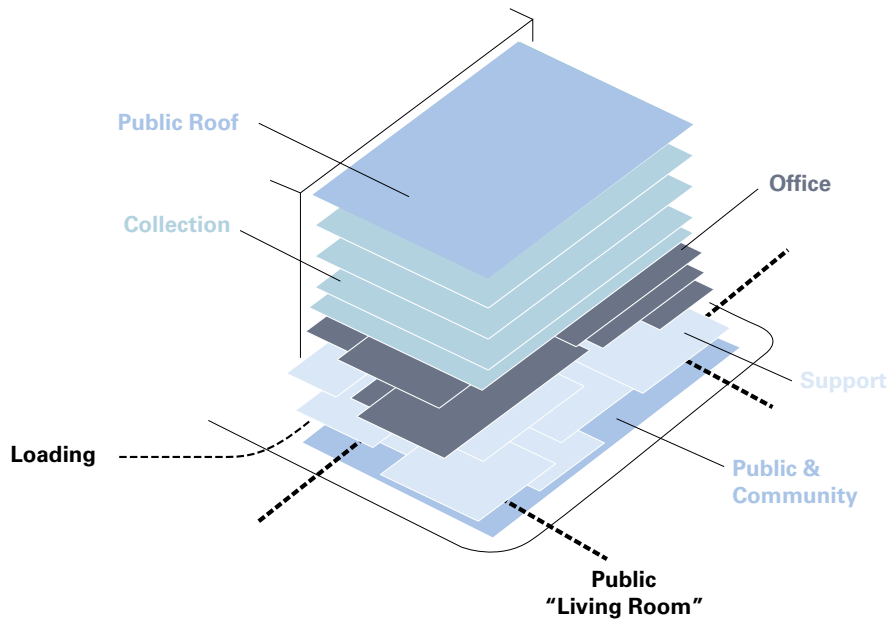
Sketch 1: diagram



Sketch 2: context model



Sketch 2: section model



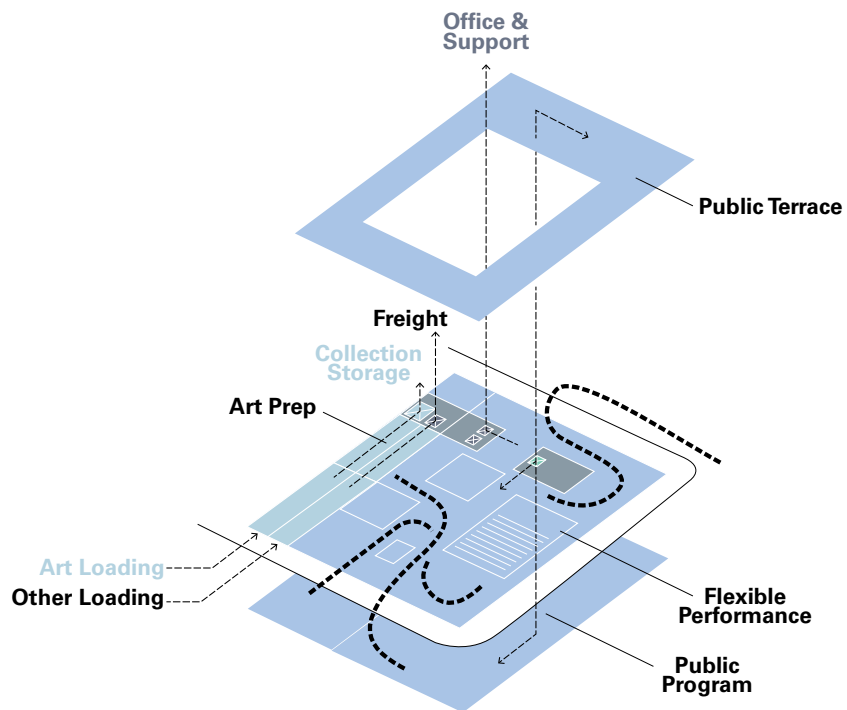
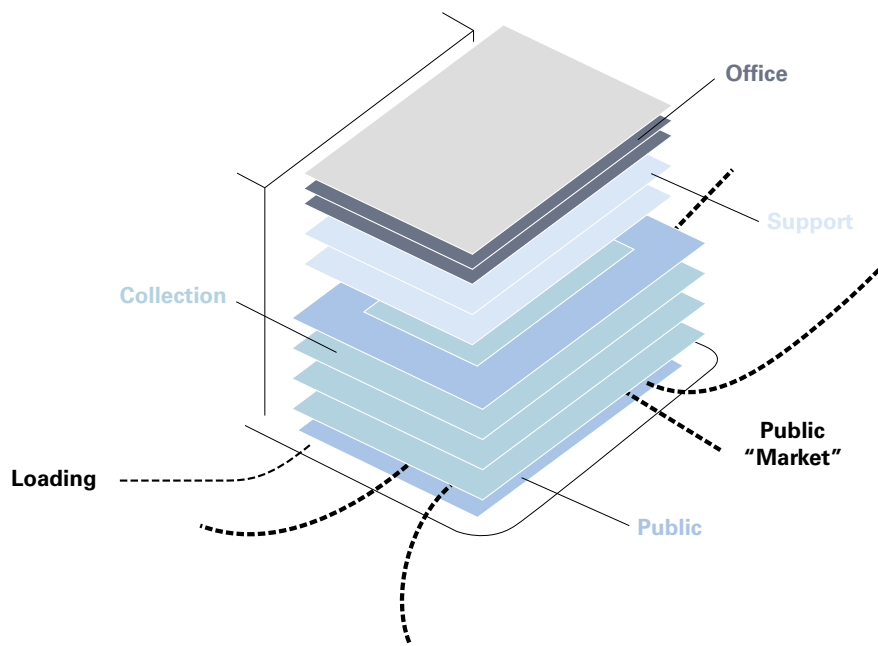
Sketch 2: diagram



Sketch 3: context model



Sketch 3: section model



Sketch 3: diagram