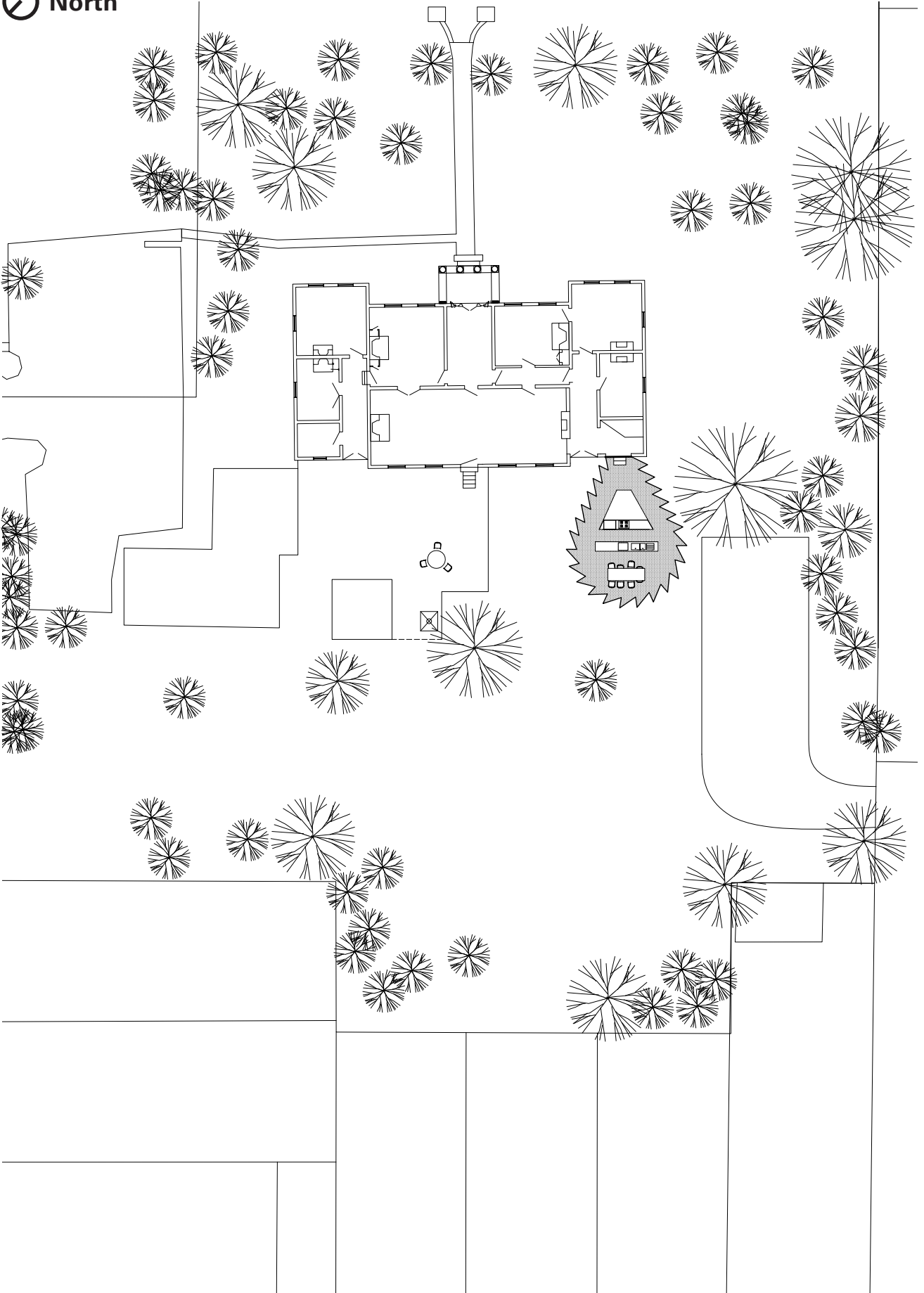


**Costa House  
Lexington, USA**

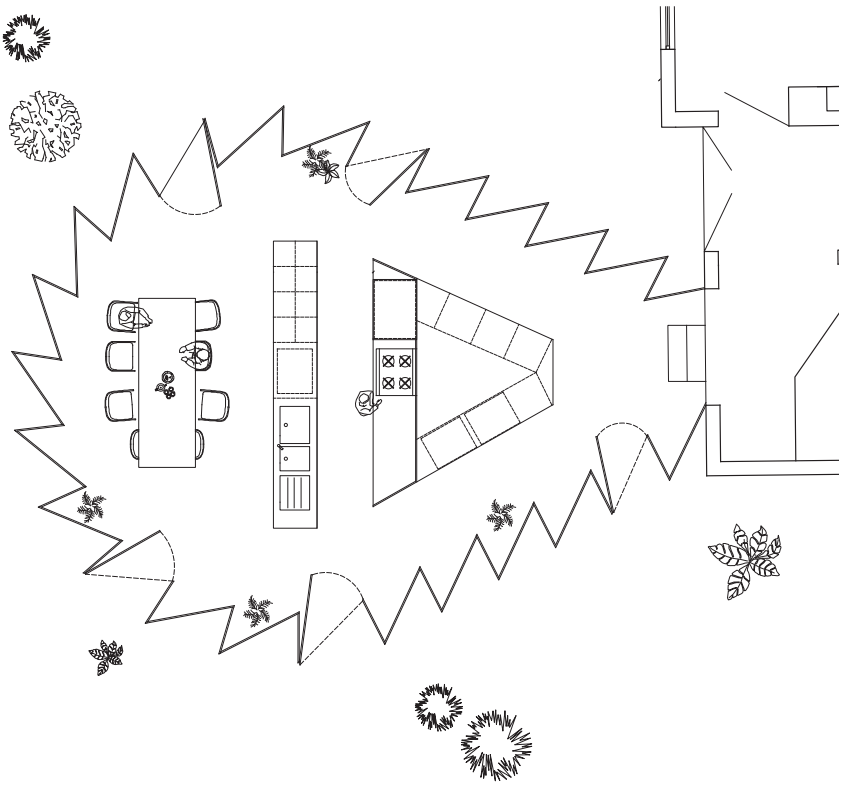
**This expansion of an important historical Kentucky home responds to the beautiful natural setting in which the house is located. Instead of a typical transparent garden room, we propose a facade that reflects and filters the surroundings to create an enveloping magical atmosphere. The kitchen counter, cooking island and floor are all created from poured-in-place concrete. Innovative materials were also used for the roof. It is made of fiber reinforced plastic, eliminating the need for structure.**

<b>Client</b>	<b>Undisclosed</b>
<b>Program</b>	<b>House extension</b>
<b>Area</b>	<b>485 sf / 45 m<sup>2</sup></b>
<b>Status</b>	<b>Concept design 2011</b>
<b>Team</b>	<b>Florian Idenburg, Jing Liu, Ilias Papageorgiou, Lucie Rebeyrol</b>
<b>Collaborators</b>	<b>Engineering: Front, Inc.</b>

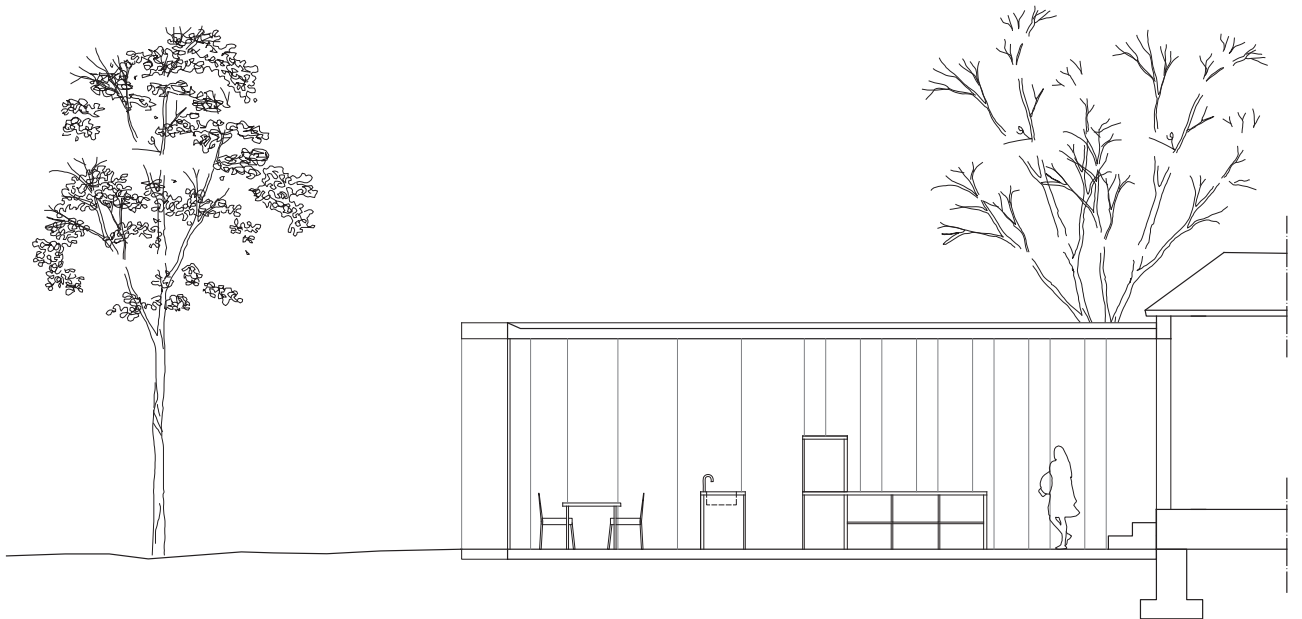
North



Site plan



**Floor plan**



**Section**





**View from garden**



**Interior**