

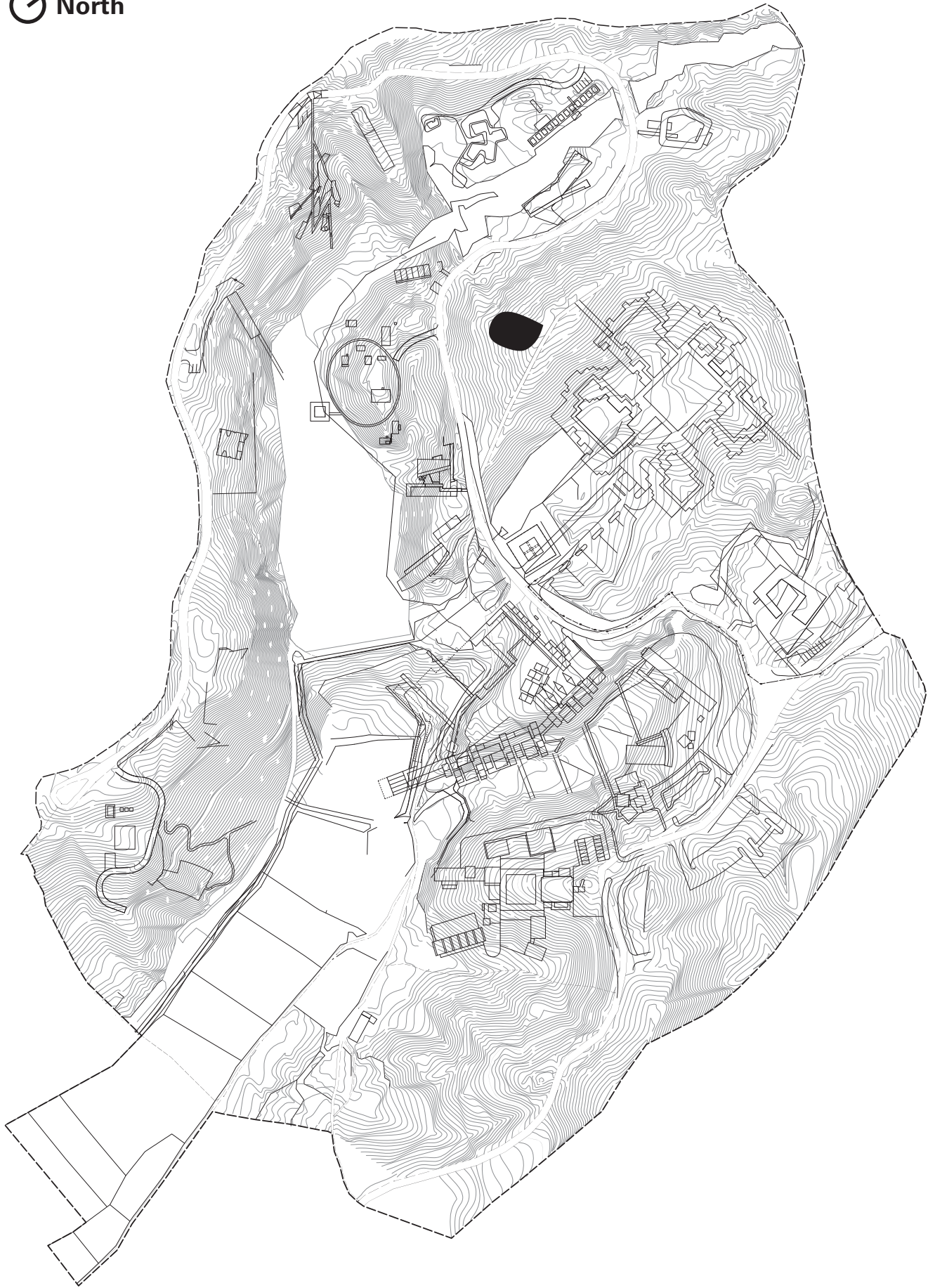
**Wedding Chapel
Nanjing, China**

This is a proposal for a wedding Chapel as part of the China International Practical Exhibition of Architecture, (CIPEA) in Nanjing. The project is located northwest of the old capital, on the lush shores of Foshou Lake.

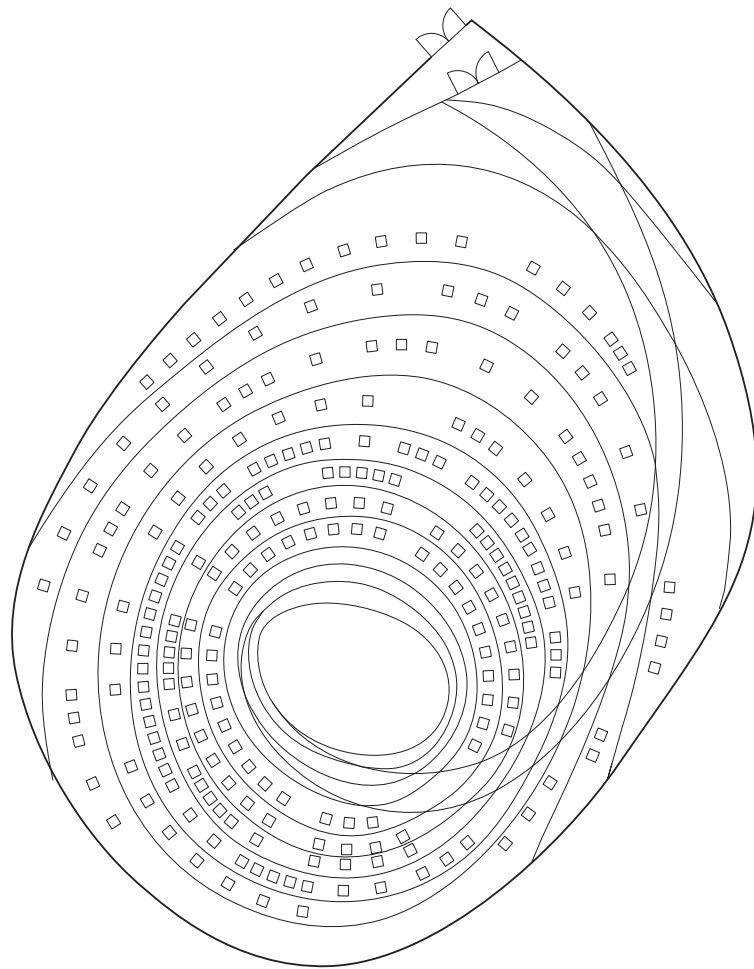
Situated in a beautiful mountainous landscape, we propose a singular gesture to create an intimate environment. Through splitting the topographic landscape a space is generated within the site. Surrounded by trees, light filters in from the sides. From the top of the roof, one can see the sunset behind the mountains and the Yangtze river in a distance.

Client	Nanjing Foshou Lake Architecture & Art Development
Program	Wedding chapel
Area	4,800 sf / 450 m²
Status	Concept design 2008
Team	Florian Idenburg, Jing Liu, Ilias Papageorgiou, Chris Cornecelli, Iannis Kandyliaris

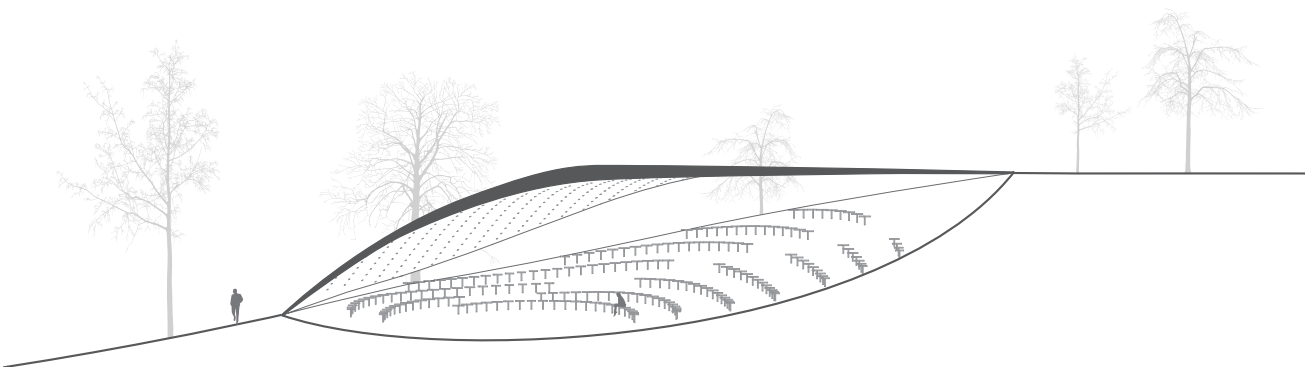
North



Site plan

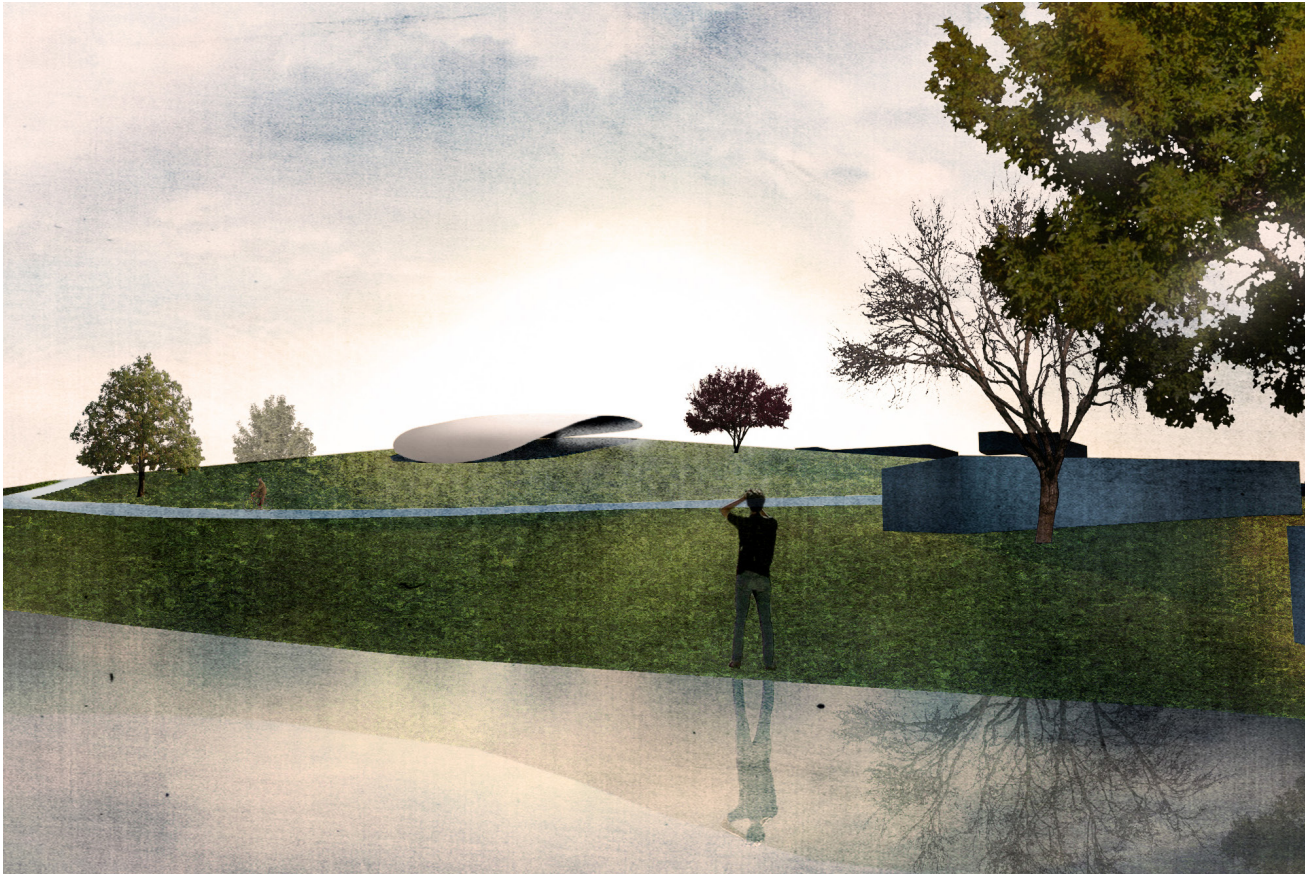


Plan

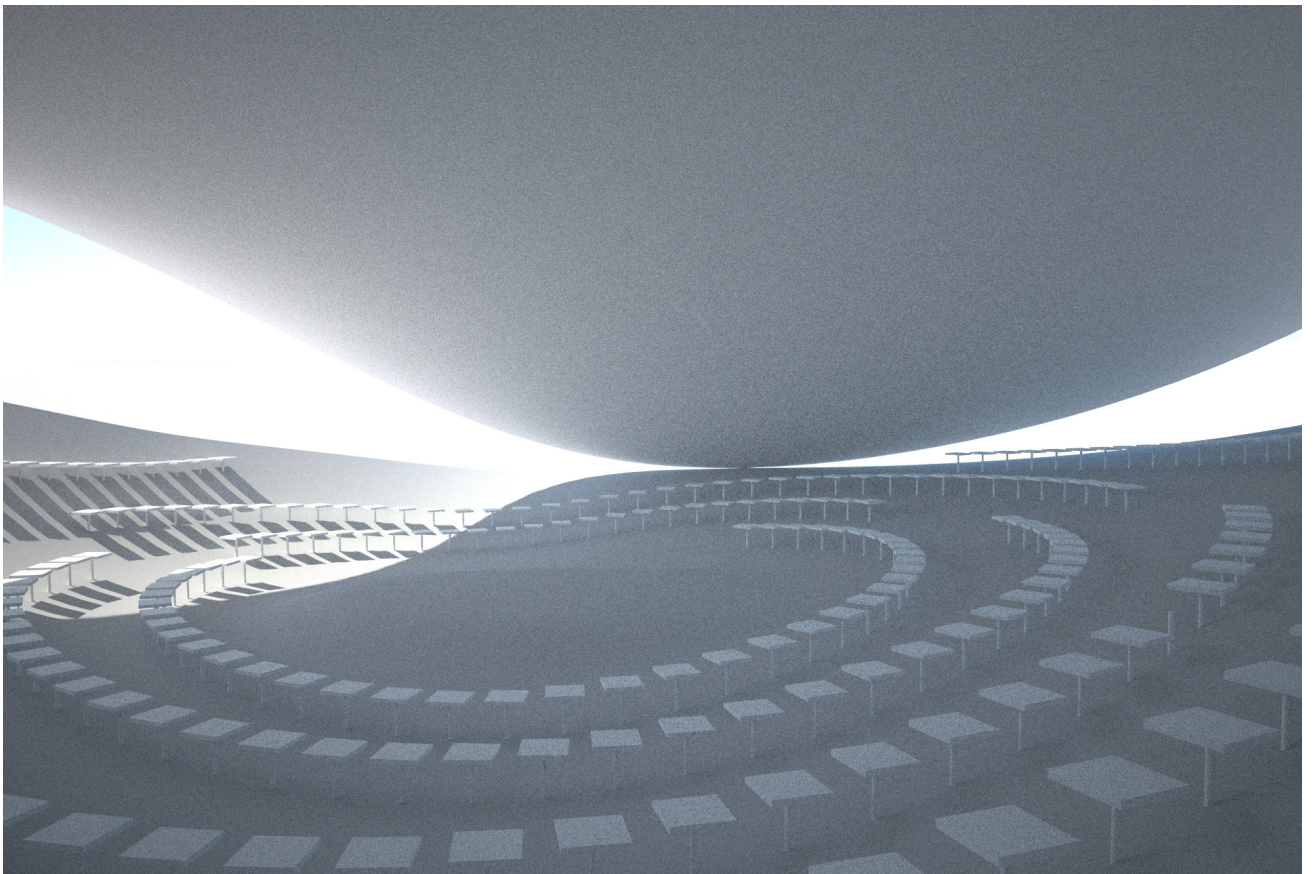


Section





Exterior view



Interior